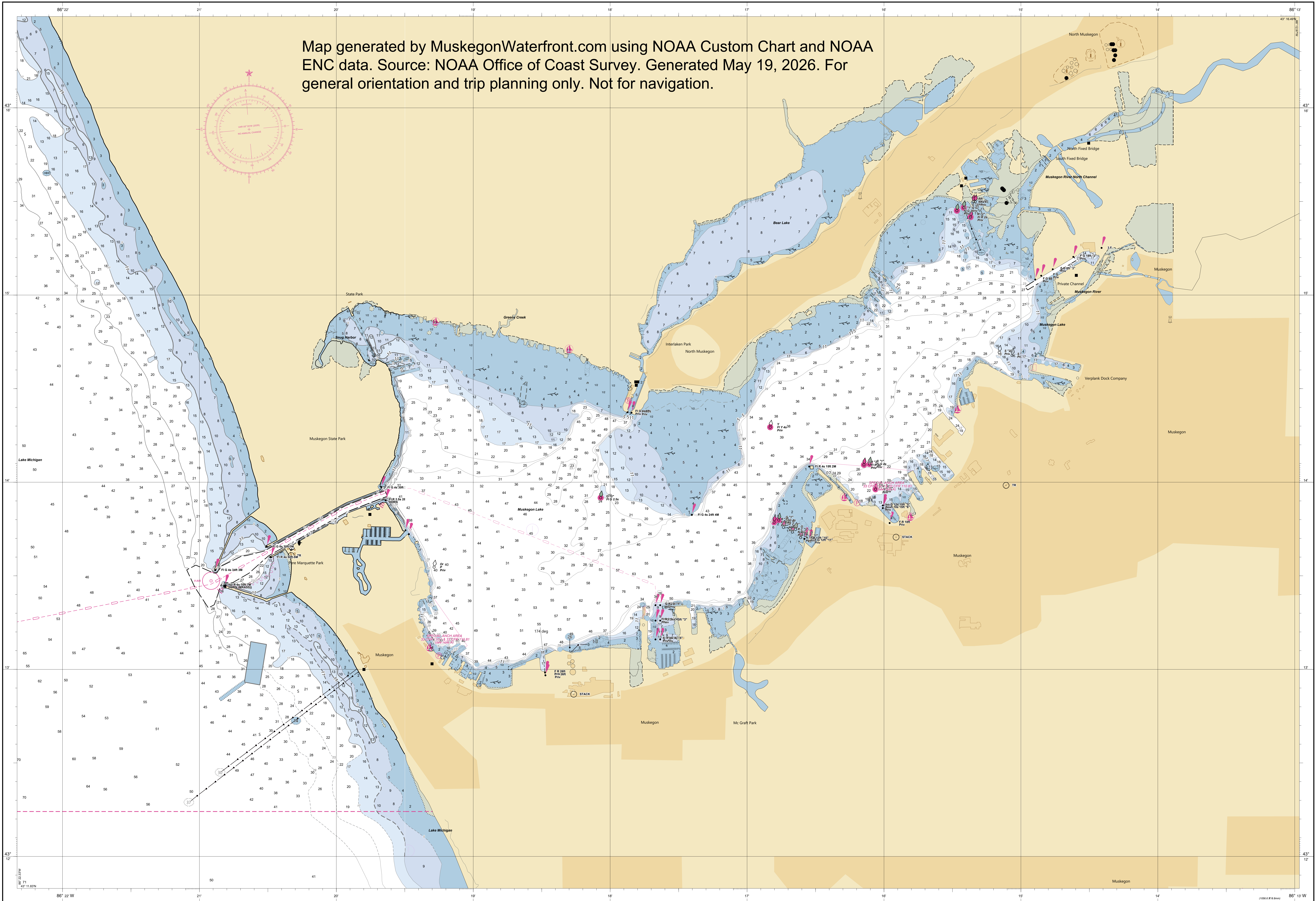


Map generated by MuskegonWaterfront.com using NOAA Custom Chart and NOAA ENC data. Source: NOAA Office of Coast Survey. Generated May 19, 2026. For general orientation and trip planning only. Not for navigation.



AUTOMATED CHART GENERATION
This NOAA Custom Chart has been automatically generated from NOAA Electronic Nautical Chart (ENC) data. Mariners using this NOAA Custom Chart are advised that this is a reproduction of the NOAA ENC. The NOAA Custom Chart has not been individually quality checked or edited for optimal use for navigation. The primary use of this chart is for general orientation and trip planning. Mariners are advised to use the original NOAA ENC. Mariners are advised to use caution when using this NOAA Custom Chart for navigation and are encouraged to use the latest NOAA ENC to access the most up-to-date information. Mariners must also comply with all applicable regulatory requirements.

HEIGHTS
Heights of fixed aids to navigation and vertical clearances of overhead obstructions will be shown in feet if the units are set to feet or fathoms. If units are set to meters, heights will be shown in meters. Land elevation values are shown in meters only.

CHART UPDATES
This NOAA Custom Chart contains up-to-date information only as of the time of creation, and will become outdated. Mariners are advised to visit their subscription chart source page to determine when to check for critical and routine updates, and to order a new NOAA Custom Chart when the ENC data used to make the chart is updated. Notices to Mariners are not used for corrections to this NOAA Custom Chart.

AUTHORITIES
Hydrography and topography by the National Ocean Service, Coast Survey, with additional data from the Corps of Engineers, Geological Survey, U.S. Coast Guard and National Geospatial Intelligence Agency.

POLLUTION REPORTS
Report all spills of oil and hazardous substances to the National Response Center at 1-800-424-8802 (8811), or to the nearest U.S. Coast Guard facility if telephone communication is impractical (22 CFR 153).

WATER LEVELS, CURRENTS, AND TIDES
Real-time water levels, tide predictions, and soil current predictions are available on the Internet from NOAA's Center for Operational Oceanographic Products and Services (CO-OPS) at https://tidesandcurrents.noaa.gov/water_level_info.html and https://tidesandcurrents.noaa.gov/currents_info.html.

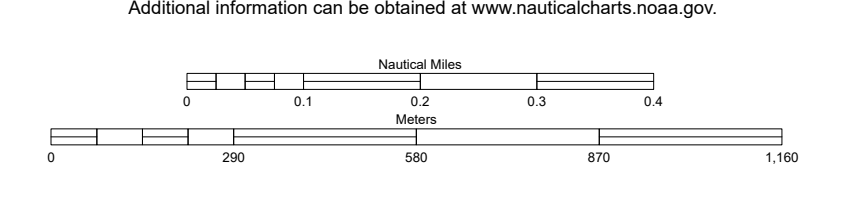
PROJECTION INFORMATION
Projection: World Mercator
SCALE: 1:12000 at Lat. 43°14'18"
GCS: WGS 1984

AIDS TO NAVIGATION
Consult the U.S. Coast Guard Light List for supplemental information concerning aids to navigation.

CAUTION
Temporary changes or defects in aids to navigation are not indicated on this chart. See Local Notice to Mariners for such information. During some winter months or when undergoing ice, certain aids to navigation are replaced by other types or removed. For details, see U.S. Coast Guard Light List.

RADAR REFLECTORS
Radar reflectors have been placed on many floating aids to navigation. Individual radar reflector identification on these aids has been omitted from this chart.

CAUTION
Limitations on the use of radio signals as aids to marine navigation can be found in the U.S. Coast Guard Light List and National Geospatial Intelligence Agency Publication 117. Radio direction-finder bearings to commercial broadcasting stations are subject to error and should be used with caution.



Conversion table for feet and meters.

NOAA encourages users to submit inquiries, discrepancies, or comments about this chart via NOAA's ASSIST tool at <https://www.nauticalcharts.noaa.gov/customer-service/assist/>.

To ensure that this chart was printed at the proper scale, the line above should measure six inches (152 millimeters).